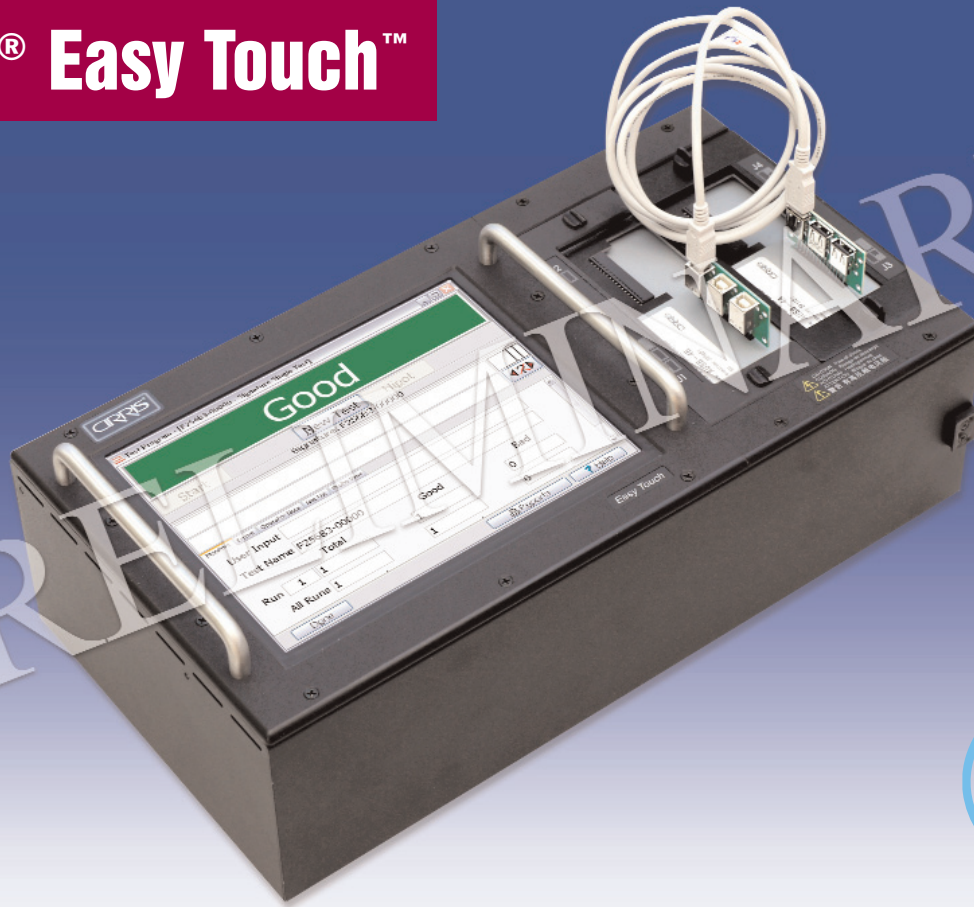


# Signature® Easy Touch™



## Hipot Cable/Harness Testing with Large Touch-Screen Control

The Signature Easy Touch combines the power of Cirris' easy-wire software with the proven performance of the Signature Touch 1 into the most revolutionary high-voltage benchtop wiring analyzer ever.

**Signature reliability + easy-wire software = unparalleled capability:** Cirris' easy-wire software has previously been available only on our PC controlled CR and CH2 testers. Now you can have all of the advantages of this incredibly powerful software in the Signature Easy Touch stand-alone benchtop tester with interchangeable adapters.

**Cross-compatibility with existing test programs:** Easy Touch provides complete compatibility with existing Touch 1 and 1100R+/H+ programs.

**IPC-WHMA A-620 Compliant:** With 1500VDC and optional 1000VAC test voltage capability, Easy Touch meets all requirements of the A-620 specification for class 1, 2 and 3 assemblies.

**Fast, Easy to Use:** With its lightning-fast integrated PC, and 10.4" full-color touch-screen display, Easy Touch guides the operator with easy-to-follow instructions. Whether you're testing simple cables, or complex

assemblies with integrated components, Easy Touch makes the job easy. The built-in easy-wire user manual provides immediate on-screen help.

**Durable, Reliable:** Cirris testers are in use in over 6,000 factories throughout the world, with over 30,000 systems in use. Whether integrated into automated assembly machines or used as stand-alone testers they are built for high-volume production environments. Easy Touch is backed by this solid reputation and our one-year warranty and 30-day right-of-return guarantee.

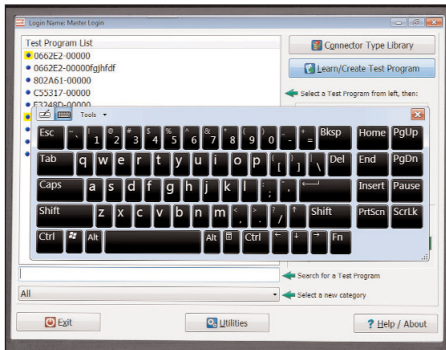
Call Toll-free 1-800-441-9910 • [www.cirris.com](http://www.cirris.com)

# CIRRIS®

Cable/Harness Testing Made Easy™

**Built-in Pentium PC:** Easy Touch features an integrated Pentium PC running Windows 7 complete with hard-drive, VGA, DVI, USB, Ethernet and audio ports.

**Large Touch Screen Full-Color Display:** This high-quality 10.4" graphical touch-screen display allows full access to the easy-wire software. DVI output and fully functional USB ports allow you to additionally plug in an external monitor and keyboard.



On-screen keyboard for easy editing.

**Complete Testing:** Easy Touch checks for opens, shorts and miswires. It verifies the quality of solder and crimp terminations by measuring resistance and performs insulation resistance and DWV testing up to 1500VDC - 1000VAC (optional). It also tests assemblies with components such as resistors, diodes, capacitors, LED's, switches, twisted pairs and more.

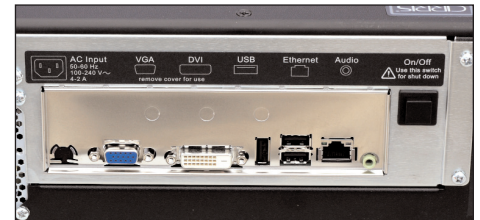
**4-Wire "Kelvin" Testing:** Null out fixturing resistance and test resistance as low as .001  $\Omega$  with Easy Touch using 4-wire "Kelvin" mode. (requires 2 test points per 4-wire point).

**Custom Scripting:** (optional): Easy Touch runs the same scripts as the Cirris Touch 1. This powerful feature allows you to customize testing for virtually any application. You can create and use custom component and test event scripts.

### Networking and SPC Data

**Collection:** Today's world-class factories take advantage of networked testers for the purpose of managing test programs and data. Easy Touch can be the platform for your complete factory floor quality system.

**Expandable:** from 128 to 1024 points with add-on boxes (128 pts/box).



Easy Touch includes VGA, DVI, USB, Ethernet, audio, and auxiliary digital I/O ports.

## Specifications

### CAPACITY:

128 to 1024 points in 128 point increments

### TEST LEVELS:

Low Voltage Tests:  $\leq 5$  volts 6mA max current  
High Voltage Tests: 50-1500VDC  $\pm 5\%$   
50-1000VAC  $\pm 5\%$  (optional)

### SENSITIVITY:

**Connection Resistance:**  
.1 $\Omega$  to 100k $\Omega$   $\pm 1\%$   $\pm .1\Omega$  also: 500k $\Omega$ , 1M $\Omega$ , 5M $\Omega$   $\pm 10\%$

**4-wire Resistance:**  
.001 to 10 $\Omega$   $\pm 2\%$   $\pm .001\Omega$

**High Voltage Insulation Resistance:**  
5M $\Omega$  to 1000M $\Omega$   $\pm 10\%$

**High Voltage AC DWV test (optional):**  
.1mA to 1.5mA leakage current threshold

**High Voltage Dwell (duration):**  
10 ms to 120 seconds (optional AC 25, 50, 30, 60 Hz)

### COMPONENT TESTS:

DIODES: Silicon, zeners with negative bias breakdown  $>4V$   
RESISTORS: .1 $\Omega$  to 100k $\Omega$   $\pm 1\%$  (10% tolerance)  
CAPACITORS: 5nF to 100 $\mu F$   $\pm 10\%$   $\pm .02nF$  (relative measurements to 10pF)

**TEST RATE:** Connection Test: 128 points/.25 seconds (typical)  
Hipot Test: 10ms to 120 seconds duration per net  
High speed hipot: user selectable on/off

**MAX CAPACITANCE PER NET FOR HIPOT TEST:** 0.2 $\mu F$  @ 300VDC, 80nF @ 500VDC, 20nF @ 1000VDC, 20nF @ 1500VDC, 2.5nF @ 1000VAC

**MAX TEST POINTS PER NET:** 512

**HV ENERGY LIMIT:** 35mJoules

**PROBE:** For test point identification

**CONTROLLER:** Built-in Pentium PC running Windows 7 with hard drive, VGA, DVI, USB, Ethernet, audio and auxiliary digital I/O ports

**POWER:** 100-250VAC, 50-60Hz, max 50W

**SIZE:** Main unit: 17.5" w x 9" h x 5" d (44.5 cm x 23 cm x 13 cm)  
Add-on box: 6.5" w x 9" h x 5" d (16.5 cm x 23 cm x 13 cm)

**WEIGHT:** Main unit: 18 lbs (8.2 kg)  
Add-on box: 6.5 lbs (2.9kg)

**DISPLAY:** 10.4" Full-Color Graphical Touch Screen

**WARRANTY:** One year parts and labor